



Carefully crafted to serve the world

LuoYang IDM Metallurgy Trading Co., Ltd.

IDM METALLURGY

LuoYang IDM is committed to the development of industries such as smelting and casting equipment in China, and has its own unique advantages in this field. For many years, the company has always prioritized technological research and development, and has carried out a series of upgrades and improvements to its products, enhancing their competitiveness. Currently, we have maintained friendly cooperative relationships with many countries in Central Asia, the Commonwealth of Independent States, South America, and more.


Heat treatment furnace

Melting furnace

Rolling mill


Foundry equipment

 Tangshan City, Hebei Province, China

 www.lyidm.com

 jack_idm@163.com

 +86-15036707993

 +86-37968291218

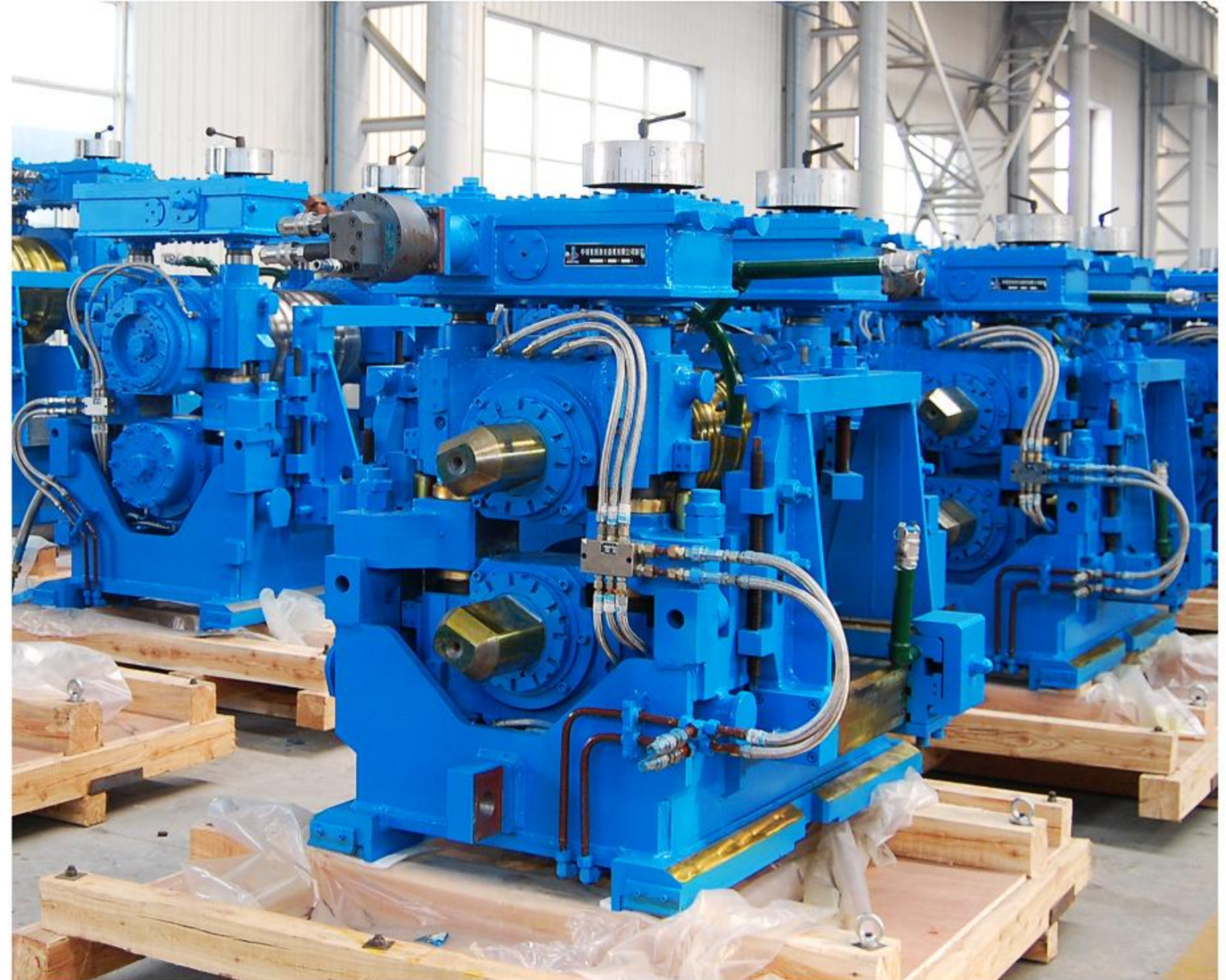
Planetary Rolling Mill

The Planetary Rolling Mill is a rolling mill composed of two support rollers and many small planetary rollers surrounding the circumference of the support rollers. The total rolling reduction rate is very large, up to 90% to 98%. During the rolling process, the rolled piece not only does not cool down but can be heated up by 50°C to 100°C, which is beneficial to the processing of special steels with strict temperature requirements.



What is Planetary Rolling Mill

The Planetary Rolling Mill is a continuous rolling mill with large rolling reduction. It has advantages of high efficiency, large rolling reduction, large elongation, simple and compact structure, easy operation, low power and water consumption, no need for secondary heating, energy saving, and suitable for rolling alloy steel that is difficult to deform.



Introduction to Planetary Rolling Mill

The Planetary Rolling Mill is mainly composed of a fixed frame, a sun gear, a moving rotary disk three rollers arranged at 120° and installed in the disk, a gear transmission mechanism, a central lubrication system, etc.

The Planetary Rolling Mill is driven by the main and auxiliary motors directly or by the speed regulating device at the same time. The small bevel gear of the main motor drives the large bevel gear fixed on the big plate and makes the big plate rotate. Because the three planetary wheels in the big plate engage with the central sun wheel, the roll rotates around the copper tube with the rotation of the big plate; The superimposed drive driven by the auxiliary motor provides an additional rotational drive to the roll to ensure the rotation and progress of the rolled piece.

One of the keys to adjusting the operation of the rolling mill is to adjust the input speed of the main and auxiliary motors. The roll axis and the rolling line form a certain inclination angle. To achieve rolling, the roll axis must be deflected by another angle around the planet wheel axis. The roll axis and the rolling line form two straight lines that intersect in space.

The main advantage of the planetary rolling mill is that the deformation of the metal after one pass is very high. The billet pipes on the planetary rolling mill is compressed each time with a very small section which is not like the normal ordinary rolling mills, and the total deformation of the metal reaches 95%-98%.

Customized Design

Customized design according to the actual needs of customers.

High Quality

Advanced sensors and control systems are used to realize automatic feeding, automatic parameter adjustment automatic detection and other functions to improve production efficiency and quality.

Good Performance

Equipped with various complete auxiliary systems such as accurate automatic strip centering system, safe and reliable CO2 automatic fire extinguishing system lubrication system, dry air purging device, smoke recovery device, etc., providing a reliable guarantee for the production of excellent products.

Product Features

Through data mining and analysis, real-time monitoring of the production process, predictive maintenance and other functions can be realized to improve production reliability and reduce maintenance costs. At the same time, by optimizing structural design and using new materials, we can further reduce energy consumption and reduce environmental pollution.

Working Principle

The Planetary Rolling Mill is one rotary-rolling pipe mill for metal pipe with widely-known technology which is mainly driven by main and auxiliary motors. During rolling, the main and auxiliary motors drive the rollers installed on the rolling mill rotary body to revolve around the rolling center line and at the same time, the rollers rotate around their respective axes. During the rolling process, by adjusting the speed of the main and auxiliary motors, the rolled pipes will not rotate after leaving the rolling mill, so that extra-long pipes can be rolled.

Casting length	Casting billet feed rate	Product specification	Production capacity
m	m/min	mm	t/h
≤25	≤1.9	φ48-φ53x2.4-4.0±0.20	4.5

Heat treatment furnace factory

Factory Introduction

In order to continuously improve the quality of thermal treatment furnace, we have carried out unremitting research in the four aspects of safety, stability, efficiency, and energy saving for many years, and conducted experiments and explorations around the two major topics of reducing power consumption and reducing heat loss. Today, IDM's thermal processing furnace has an excellent performance in terms of product performance, and has established trust with customers from all over the world to meet their needs for high quality products.



Melting furnace factory

Factory Introduction

The development, production and technical upgrade of the intermediate frequency induction furnace and the sensing heating control system is one of the operating projects of IDM Metallurgy Group. The R & D Center is located in Cangzhou City and Factory of Hebei Province, China, and is located in Tangshan City Hebei Province, China. It covers an area of more than 15,000 square meters. It has a complete sales and after-sales service system. The products are sold to more than 70 countries and have been well received by customers.



Rolling mill factory

Factory Introduction

The IDM Metallurgy Group's rolling machine is located in the industrial park of Tangshan City, Hebei Province, China. It covers an area of more than 20,000 square meters. It integrates production, research and development, and sales. The comprehensive strength is among the top domestic industry. In 2016 technical cooperation with many universities in China, in -depth research in the safety and stability of the rolling machine, continuously improved product quality, and won the recognition of customers at home and abroad.



Foundry equipment factory

Factory Introduction

As the core product of the IDM Industrial Group, the casting equipment has a large proportion in the annual export share. Resin Sand Casting Line, Static Pressure Automatic Molding Line, Iron Mold Sand Coated Casting Plant and other equipment were exported to South America Eastern Europe, Africa, and West Asia, and were widely used in automotive, ships, steel, and aerospace and other fields. Mature production technology and thoughtful after sales service are important guarantees for overseas customers to establish a cooperative relationship with IDM.

